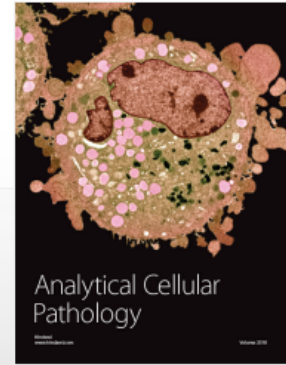


Analytical Cellular Pathology



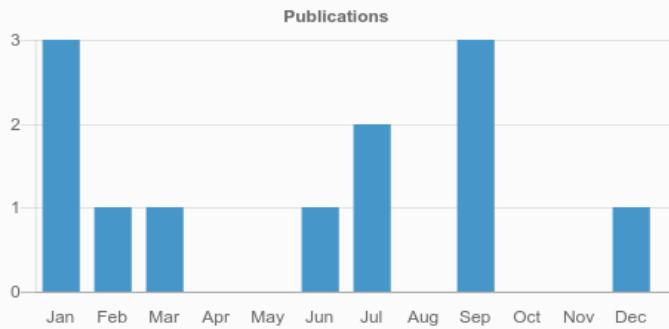
Analytical Cellular Pathology

1.788

CURRENT IMPACT FACTOR

1.68

CURRENT CITESCORE



66

Total authors



12

Total published articles

87

DAYS

Average time from submission to acceptance

82

DAYS

Average time from acceptance to publication

96

Total submitted articles

12

Total accepted articles

Most Viewed Articles

Article	Views
Stabilizing versus destabilizing the microtubules: a double-edge sword for an effective cancer treatment option?	1,984
Cell therapies in cardiomyopathy: current status of clinical trials	1,724
C1q nephropathy- The unique under-recognized pathological entity	1,345
The recent advances on liver cancer stem cells: biomarkers, separation, and therapy	1,194
NON-ALCOHOLIC FATTY LIVER DISEASE: CONCORDANCE AMONG CLASSIFICATIONS AND RELATIONSHIP BETWEEN DEGREES OF MORPHOLOGICAL FEATURES AND SPECTRUM OF THE DISEASE	915
A simple method to assess in vivo proliferation in lung vasculature with EdU: the case of MMC-induced PVOD in rat	861
ROLE OF NATURAL RADIOSENSITIZERS AND CANCER CELL RADIORESISTANCE: AN UPDATE	829
Single-Cell Sequencing Technology in Oncology: Applications for Clinical Therapies and Research	780
Comparison of the manual, semi-automatic and automatic selection and leveling of hot-spots in whole slides images for Ki-67 quantification in meningiomas	655
Tumour associated macrophages in kidney cancer	644

Most Viewed Special Issue Articles

Article	Views
An Editors Perspective on Digital Pathology	289
Whole Slide Imaging (WSI) based Digital Pathology Network between Pakistan and USA	277
Digital Pathology - How Far are We from Automated Tissue - based Diagnosis?	209
Color Management in Digital Pathology	193
Digital Teleconsultation: Clinical Perspectives	189
The Importance of User Interface and User Experience in the adoption of Whole Slide Images for Clinical Use	178
The Role of Micro CT in the Imaging of Cancer	134
Enhancing Automatic Classification of Hepatocellular Carcinoma Images through Image Masking, Tissue Changes and Trabecular Features	123
Analysis of Color Consistency in Retinal Fundus Photography: Application of Color Management and Development of a Eye Model Standard	116



Key Indexes

 [Web of Science](#)

 [Scopus](#)

[View all abstracting and indexing databases for this journal](#)