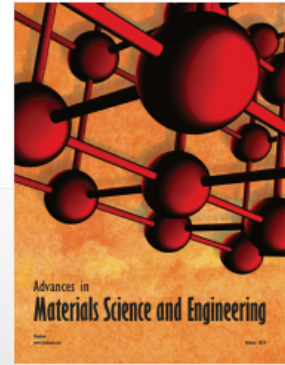
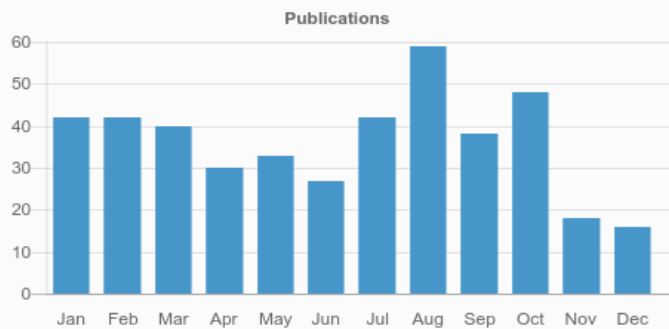



Advances in Materials Science and Engineering




1.399
CURRENT IMPACT FACTOR

0.91
CURRENT CITESCORE



 **1,675**

Total authors

 **435**

Total published articles

93
DAYS

Average time from submission to acceptance

40
DAYS

Average time from acceptance to publication

1,752

Total submitted articles

505

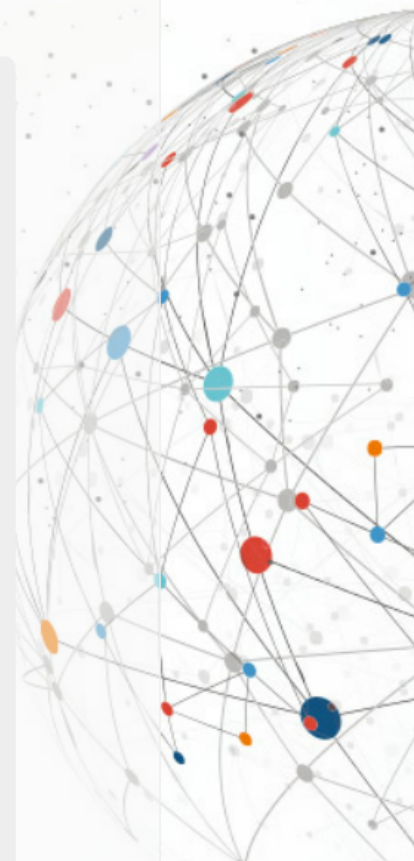
Total accepted articles

Most Viewed Articles

Article	Views
Effect of w/c ratio on durability and porosity in cement mortar with constant cement amount	7,514
Properties of Reinforced Concrete Steel Rebars Exposed to High Temperatures	6,281
Effects of clay and moisture content on direct shear tests for clay sand mixtures.	5,710
A Study in Physical and Mechanical Properties of Hemp Fibres	5,039
An overview of nanomaterials for water and wastewater treatment	4,309
Biochar Preparation, Characterization, Adsorptive Capacity and Its Effect on Bioavailability of Contaminants: An Overview	4,039
Preparation and Characterization of Reduced Graphene Oxide Sheets via Water-based Exfoliation and Reduction Methods	3,653
Compressive strength of compacted clay-sand mixes	3,345
Inspection of Wooden Poles in Electrical Power Distribution Networks in Artvin-Turkey	2,893
Wood vs. Plant Fibers: Similarities and Differences in Composite Applications	2,677

Most Viewed Special Issue Articles

Article	Views
A review on removal of pollutants from water/wastewater using different types of nanomaterials	13,858
Evaluation of relationship between water absorption and durability of concrete materials	8,666
Feasibility of Pulverized Oyster Shell as A Cementing Material	7,781
Zeolite Y - Synthesis, Modification, Properties: a Case Revisited	6,046
A Review on Conduction Mechanisms in Dielectric Films	5,348
Calculation of Axial Compression Capacity for Square Columns Strengthened with HPFL and BSP	4,664
FLEXURAL STRENGTH EVALUATION OF REINFORCED CONCRETE MEMBERS WITH ULTRA HIGH PERFORMANCE CONCRETE	2,707
Characterisation and properties of lithium disilicate glass-ceramics in the SiO ₂ -Li ₂ O-K ₂ O-Al ₂ O ₃ system for dental applications	2,223
A Review on the green synthesis of silver nanoparticles and their morphologies studied via TEM	2,063



Experimental study on bond behavior between plain reinforcing bars and concrete

2,056

Key Indexes

 [Web of Science](#)

 [Scopus](#)

[View all abstracting and indexing databases for this journal](#)