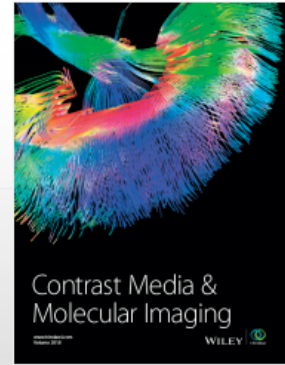


Contrast Media & Molecular Imaging

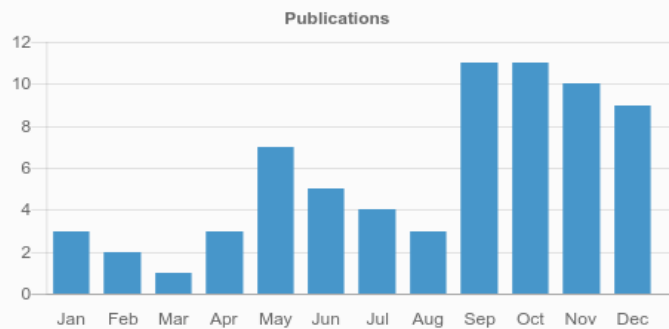
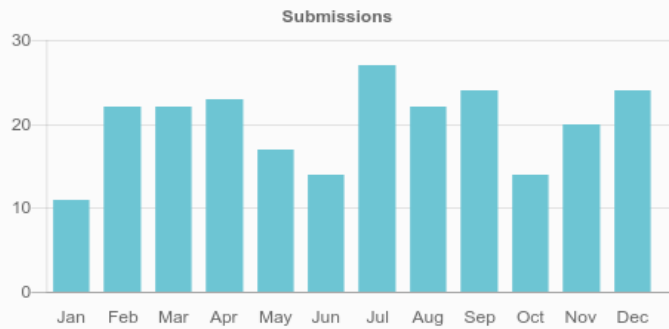


Contrast Media & Molecular Imaging

WILEY

1.984

CURRENT IMPACT FACTOR



480

Total authors



69

Total published articles

96
DAYS

Average time from submission to acceptance

40
DAYS

Average time from acceptance to publication

240

Total submitted articles

79

Total accepted articles


Most Viewed Articles

Article	Views
Analytical interference by contrast agents in biochemical assays	1,182
Comparative evaluation of anti-HER2 affibody molecules labeled with ^{64}Cu using NOTA and NODAGA	502
High contrast PET imaging of GRPR expression in prostate cancer using cobalt-labeled bombesin antagonist RM26	483
Meta-analysis of the correlation between Apparent Diffusion Coefficient (ADC) and Standardized Uptake Value (SUV) in malignant disease	460
The effect of diagnostic imaging on surgical treatment planning in diseases of the thymus	456
Uptake of ^{18}F -FET and ^{18}F -FCH in human glioblastoma T98G cell line after irradiation with photons or carbon ions	436
Molecular Imaging To Predict Response To Targeted Therapies In Renal Cell Carcinoma	415
Investigating the Lymphatic System by Dual-color Elemental Mass Spectrometry Imaging	406
Contrast-enhanced microtomographical characterisation of vessels in native bone and engineered vascularised grafts using ink-gelatin perfusion and phosphotungstic acid	376
Cancer metabolism and tumor heterogeneity: imaging perspectives using MR imaging and spectroscopy	336

Most Viewed Special Issue Articles

Article	Views
Molecular imaging of cancer with nanoparticle-based theranostic probes	862
Clinical Applications of Contrast-Enhanced Perfusion MRI Techniques in Gliomas: Recent Advances and Current Challenges	724
TSPO PET Imaging: from microglial activation to peripheral sterile inflammatory diseases?	662
Correlation of somatostatin receptor-2 (SSTR2) expression with Gallium-68-DOTA-TATE uptake in neuroblastoma xenograft models	596
An Individually Optimized Protocol of Contrast Medium Injection in Enhanced CT Scan for Liver Imaging	547
Detecting triple-vessel disease with cadmium zinc telluride-based single photon emission computed tomography using the intensity signal-to-noise ratio between rest and stress studies	528
Application of Deep Learning in Automated Analysis of Molecular Images in Cancer	410





Integrating a ¹⁹ F MRI tracer agent into the clinical scale manufacturing of a T cell immunotherapy	396
Advanced Functional Tumor Imaging and Precision Nuclear Medicine Enabled by Digital PET Technologies	389
Labelling of ⁹⁰ Y- and ¹⁷⁷ Lu-DOTA-bioconjugates for targeted radionuclide therapy: a comparison among manual, semi-automated and fully automated synthesis.	360

Key Indexes

☆ Web of Science

☆ Scopus

[View all abstracting and indexing databases for this journal](#)

The Wiley Hindawi Partnership

Contrast Media & Molecular Imaging is a Wiley Hindawi Partnership Title. [Click here for more information.](#)