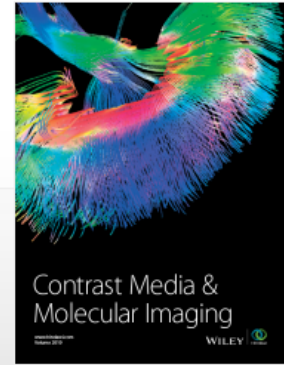


Contrast Media & Molecular Imaging



Contrast Media & Molecular Imaging

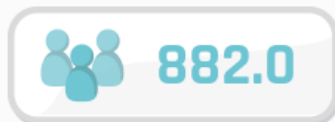
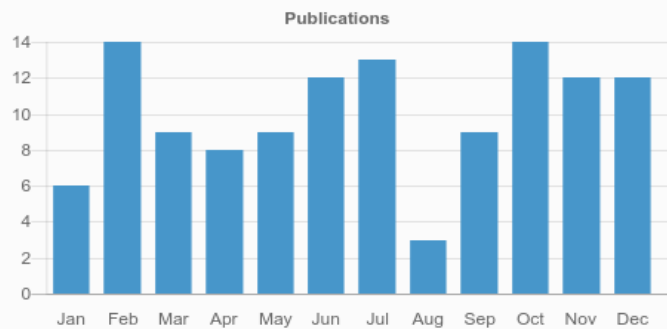
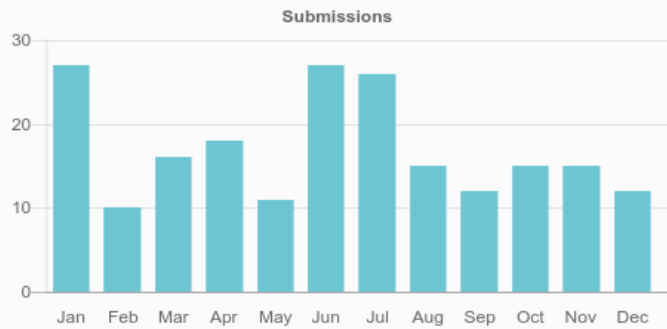
WILEY

1.984

CURRENT IMPACT FACTOR

2.44

CURRENT CITESCORE



Total authors



Total published articles



Average time from submission to acceptance



Average time from acceptance to publication



Total submitted articles



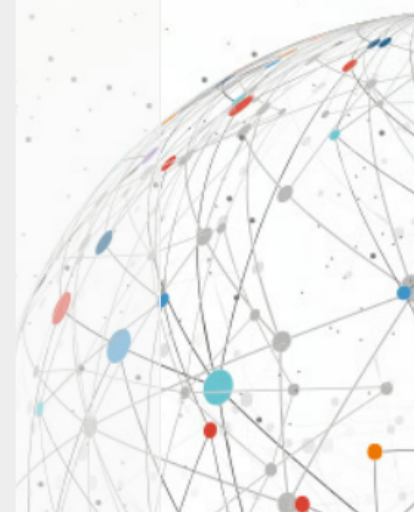
Total accepted articles


Most Viewed Articles

Article	Views
Exposure of Macrophages to Low-Dose Gadolinium-Based Contrast Medium: Impact on Oxidative Stress and Cytokines Production	1,485
Multimodal Molecular Imaging: Current Status and Future Directions	1,315
Analytical interference by contrast agents in biochemical assays	811
Brain network alterations in Alzheimer's disease identified by early-phase PIB-PET	690
Preclinical Evaluation of Radioiodinated Hoechst 33258 for Early Prediction of Tumor Response to Treatment of Vascular-Disrupting Agents	677
Early detection of A β deposition in the 5xFAD mouse by amyloid PET	649
Overview and Critical Appraisal of Arterial Spin Labelling ASL Technique in Brain Perfusion Imaging	649
A hyperfluorinated hydrophilic molecule for aqueous ¹⁹ F MRI contrast media	646
Prediction of Microvascular Invasion in Hepatocellular Carcinoma: Preoperative Gd-EOB-DTPA-Dynamic Enhanced MRI and Histopathological Correlation	626
Cancer metabolism and tumor heterogeneity: imaging perspectives using MR imaging and spectroscopy	622

Most Viewed Special Issue Articles

Article	Views
Evans Blue Dye: A Revisit of Its Applications in Biomedicine	1,929
Prospective of ⁶⁸ Ga radionuclide contribution to the development of imaging agents for infection and inflammation	1,694
An Individually Optimized Protocol of Contrast Medium Injection in Enhanced CT Scan for Liver Imaging	1,249
Preparation of ⁶⁸ Ga-PSMA-11 with a synthesis module for micro PET-CT imaging of PSMA expression during prostate cancer progression	1,078
Automated Whole-body Bone Lesion Detection for Multiple Myeloma on ⁶⁸ Ga-Pentixafor PET/CT Imaging using Deep Learning Methods	995
Clinical Applications of Contrast-Enhanced Perfusion MRI Techniques in Gliomas: Recent Advances and Current Challenges	931
Application of Deep Learning in Automated Analysis of Molecular Images in Cancer	856
Quantitative radiomics: Impact of pulse sequence	





parameter selection on MRI-based textural features of the brain	822
Preclinical in vitro and in vivo evaluation of [18F]FE@SUPPY for cancer PET-imaging: Limitations of a xenograft model for colorectal cancer	780
Molecular imaging of cancer with nanoparticle-based theranostic probes	717

Key Indexes

☆ Web of Science

☆ Scopus

[View all abstracting and indexing databases for this journal](#)

The Wiley Hindawi Partnership

Contrast Media & Molecular Imaging is a Wiley Hindawi Partnership Title. [Click here for more information.](#)