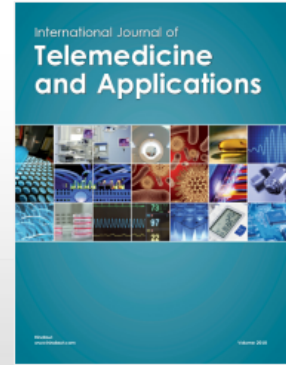
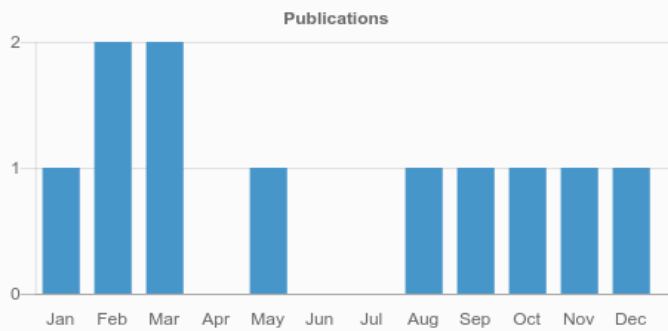


International Journal of Telemedicine and Applications



2.2
CURRENT CITESCORE



49

Total authors



11

Total published articles

89
DAYS

Average time from
submission to
acceptance

33
DAYS

Average time from
acceptance to
publication

62

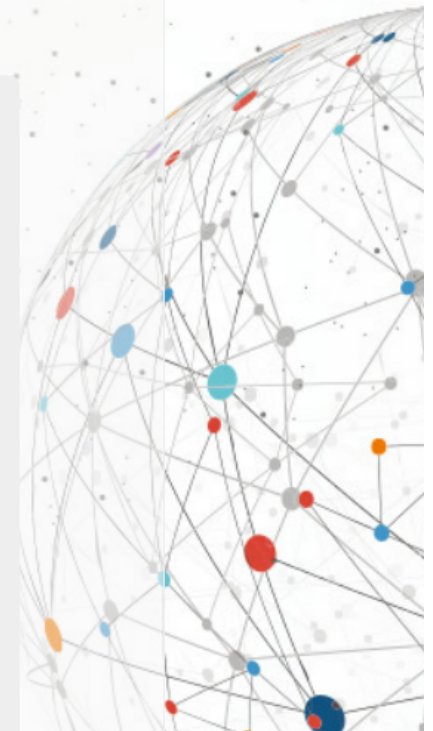
10

Most Viewed Articles

Article	Views
A Real-Time Health Monitoring System for Remote Cardiac Patients using Smartphone and Wearable Sensors	10,347
Development of a Wearable-Sensor-Based Fall Detection System	5,907
Using information and communication technology in home care for communication between patients, family members, and healthcare professionals: A systematic review	4,435
A Wireless Emergency Telemedicine System for Patients Monitoring and Diagnosis	2,741
Application of Handheld Tele-ECG for Health Care Delivery in rural India	1,339
Lessons Learned from Implementing the Patient-Centered Medical Home	1,306
An Android-Based Heart Monitoring System for the Elderly and for Patients with Heart Disease	1,267
A Way to Understand Inpatients Based on the Electronic Medical Records in the Big Data Environment	1,179
Qualitative assessment of the feasibility, usability, and acceptability of a mobile client data app for community-based maternal, neonatal, and child care in rural Ghana	1,152
The self-perception and usage of medical apps amongst medical students in the United States: a cross-sectional survey	1,083

Most Viewed Special Issue Articles

Article	Views
Experience-Sampling Methodology with a mobile device in fibromyalgia	549
Analysis of QoS Requirements for e-Health Services and Mapping to Evolved Packet System QoS Classes	521
Using exploratory focus groups to inform the development of targeted COPD self-management education DVDs for rural patients	487
e-SCP-ECG+ Protocol: An Expansion on SCP-ECG Protocol for Health Telemonitoring - Pilot Implementation.	356
How do Low-income Urban African Americans and Latinos feel about Telemedicine? A Diffusion of Innovation Analysis	343
Usability of Telehealth Technologies	322
Managing Requirement Volatility in an Ontology-Driven Clinical Laboratory Information Management System	294



(LIMS) Using Category Theory

An empirical analysis of the current need for
teleneuromedical care in German hospitals without
neurology departments

278

Real-Time and Secure Wireless Health Monitoring

262

Development of a Novel Contactless Mechanocardiograph
Device

258

Key Indexes

☆ Scopus

[View all abstracting and indexing databases for this journal](#)

