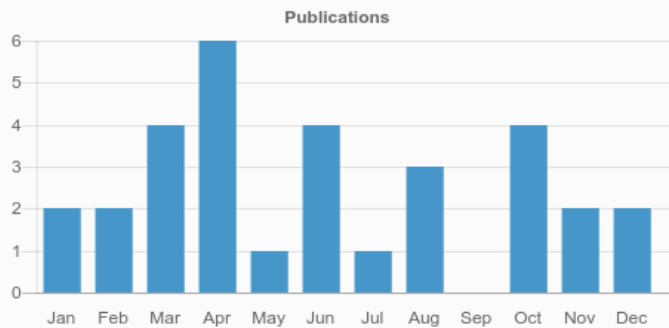
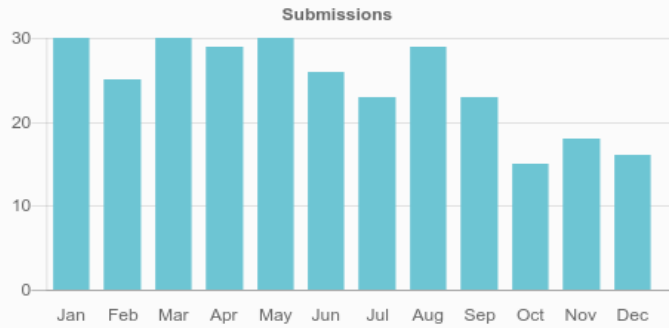


# Journal of Engineering



**0.51**  
CURRENT CITESCORE




**104**

Total authors



**31**

Total published articles

**98**  
DAYS

Average time from submission to acceptance

**47**  
DAYS

Average time from acceptance to publication

**294**

Total submitted articles

**33**

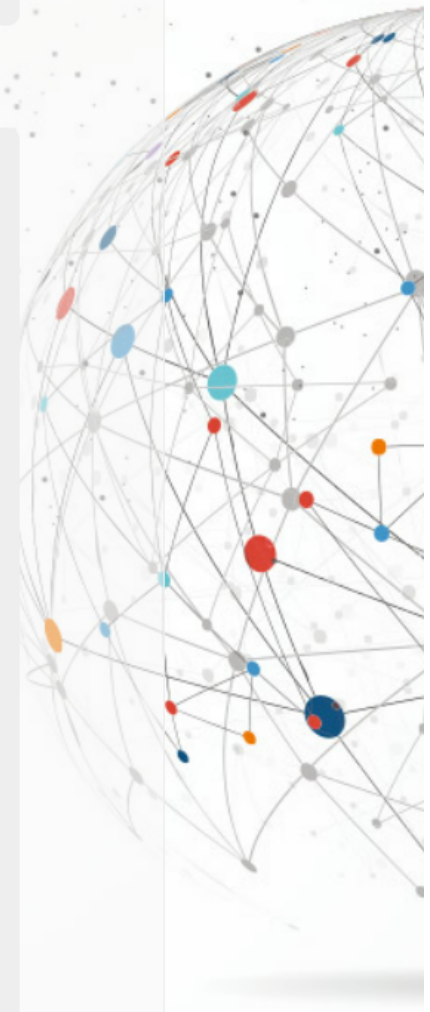
Total accepted articles

## Most Viewed Articles

| Article   | Views  |
|---|--------|
| The Most Important Maglev Applications  | 11,494 |
| Design of Batch Distillation Columns using Short-cut Method at Constant Reflux  | 3,936  |
| Review on Pervaporation: Theory, Membrane Performance and Application to Intensification of Esterification Reaction                                 | 2,930  |
| Cement Stabilized Soil Blocks Admixed with Sugarcane Bagasse Ash  | 2,882  |
| Impact analysis of window-wall ratio on heating and cooling energy consumption of residential buildings in hot summer and cold winter zone in China | 2,530  |
| Prediction of concrete temperature during curing using regression and artificial neural network   | 2,607  |
| Power Consumption, Mixing Time and Oxygen Mass Transfer in a Gas-Liquid Contactor Stirred with a Dual Impeller for Different Spacing                | 2,348  |
| A Review of Existing Microgrid Architectures  | 1,920  |
| Reducing Carbon Dioxide Emissions from Electricity Sector using Smart Electric Grid Applications  | 1,901  |
| Acoustic Absorption of Natural Fiber Composites   | 1,805  |

## Most Viewed Special Issue Articles

| Article  | Views |
|--|-------|
| High Performance Concrete Materials with Applications in Building and Civil Engineering  | 1,755 |
| The Mechanical Properties of the Concrete Using Metakaolin Additive and Polymer Admixture  | 737   |
| The hysteresis performance and restoring force model for corroded reinforced concrete frame columns  | 614   |
| Bending and shear experimental tests and numerical analysis of composite slabs made up of lightweight concrete                                   | 607   |
| Flexural Behavior of High-Volume Steel Fiber Cementitious Composite Externally Reinforced with Basalt FRP Sheet                                  | 477   |
| Determination of the transport properties of structural concrete using AC impedance spectroscopy techniques                                      | 337   |
| MODEL OF THE MECHANICAL BEHAVIOR OF CEMENTITIOUS MATRICES REINFORCED WITH NANOMATERIALS  | 336   |
| In situ determination of the transport properties of near-surface concrete using AC impedance spectroscopy techniques                            | 199   |
| An improved micromechanical framework for saturated concrete repaired by the electrochemical deposition method considering the imperfect bonding | 168   |



## Key Indexes

 Scopus

[View all abstracting and indexing databases for this journal](#)