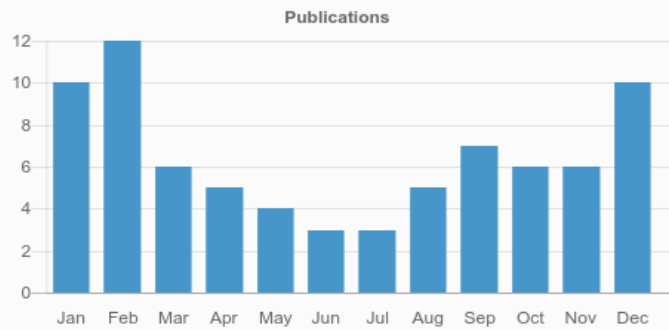
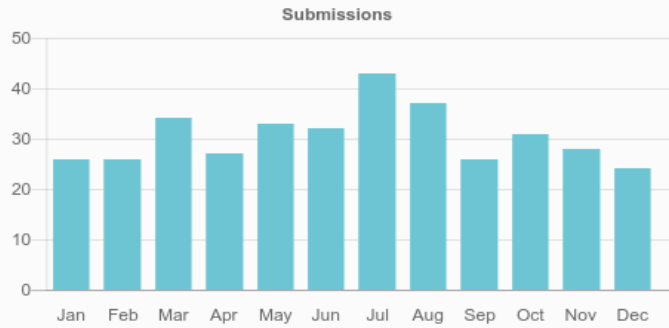


# Scientific Programming



**1.289**  
CURRENT IMPACT FACTOR

**0.81**  
CURRENT CITESCORE



 **307**

Total authors

 **77**

Total published articles

**107**  
DAYS

Average time from submission to acceptance

**52**  
DAYS

Average time from acceptance to publication

**367**

Total submitted articles

**70**

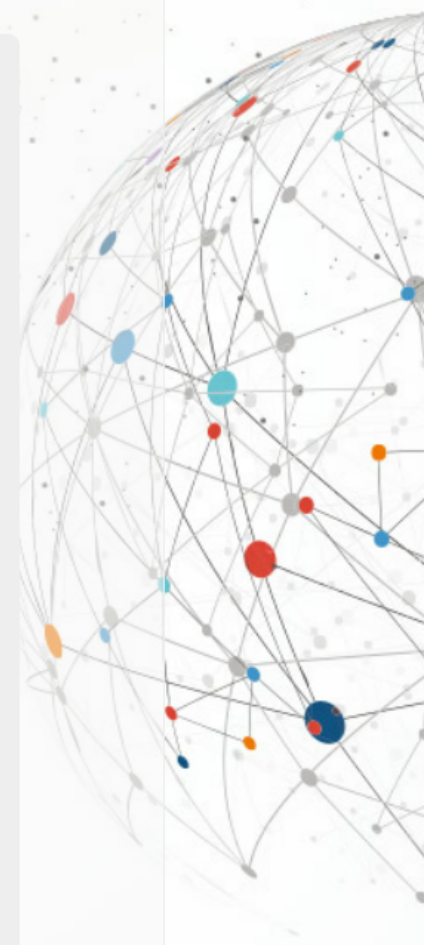
Total accepted articles

## Most Viewed Articles

Article	Views
Flexible Job Shop Scheduling Problem Using an Improved Ant Colony Optimization	1,319
A Survey on Visual Programming Languages in Internet of Things	1,314
Research of Improved FP-Growth Algorithm on Association Rules Mining	1,188
Applying Data Mining Techniques to Improve Information Security in the Cloud: A Single Cache System Approach.	924
Emulating Multiple Inheritance in Fortran 2003/2008	631
An efficient technique for hardware/software partitioning process in co-Design	594
Adaptive Cost-Based Task Scheduling in Cloud Environment	582
A parallel genetic algorithm based feature selection and parameter optimization for support vector machine	524
Using Hierarchical Latent Dirichlet Allocation to Construct Feature Tree for Program Comprehension	518
Fashion Evaluation Method for Clothing Recommendation Based on Weak Appearance Feature	510

## Most Viewed Special Issue Articles

Article	Views
Non-interest income and performance of commercial banking in China	1,840
Risk analysis on leakage failure of natural gas pipelines by Fuzzy Bayesian network with a Bow-tie model	1,621
Link Prediction Methods and Their Accuracy for Different Social Networks and Network Metrics	1,249
Extracting UML Class Diagrams from Object-Oriented Fortran:ForUML	1,236
A Heterogeneous System based on Latent Semantic Analysis (hLSA) using GPU and Multi-CPU	1,216
OpenCL Performance Evaluation on Modern Multi Core CPUs	1,059
Research on healthy anomaly detection model based on deep learning from multiple time-series physiological signals	1,008
Locality-aware Task Scheduling and Data Distribution for OpenMP Programs on NUMA Systems and Manycore Processors	816
Bi-level Fuzzy Chance Constrained Hospital Outpatient Appointment Scheduling Model	805
Effective SIMD Vectorization for Intel® Xeon Phi™ Coprocessors	795



## Key Indexes

☆ [Web of Science](#)

☆ [Scopus](#)

[View all abstracting and indexing databases for this journal](#)